



Annual General Meeting CEO Presentation

23 November 2018

Disclaimer & Competent Person's Statement

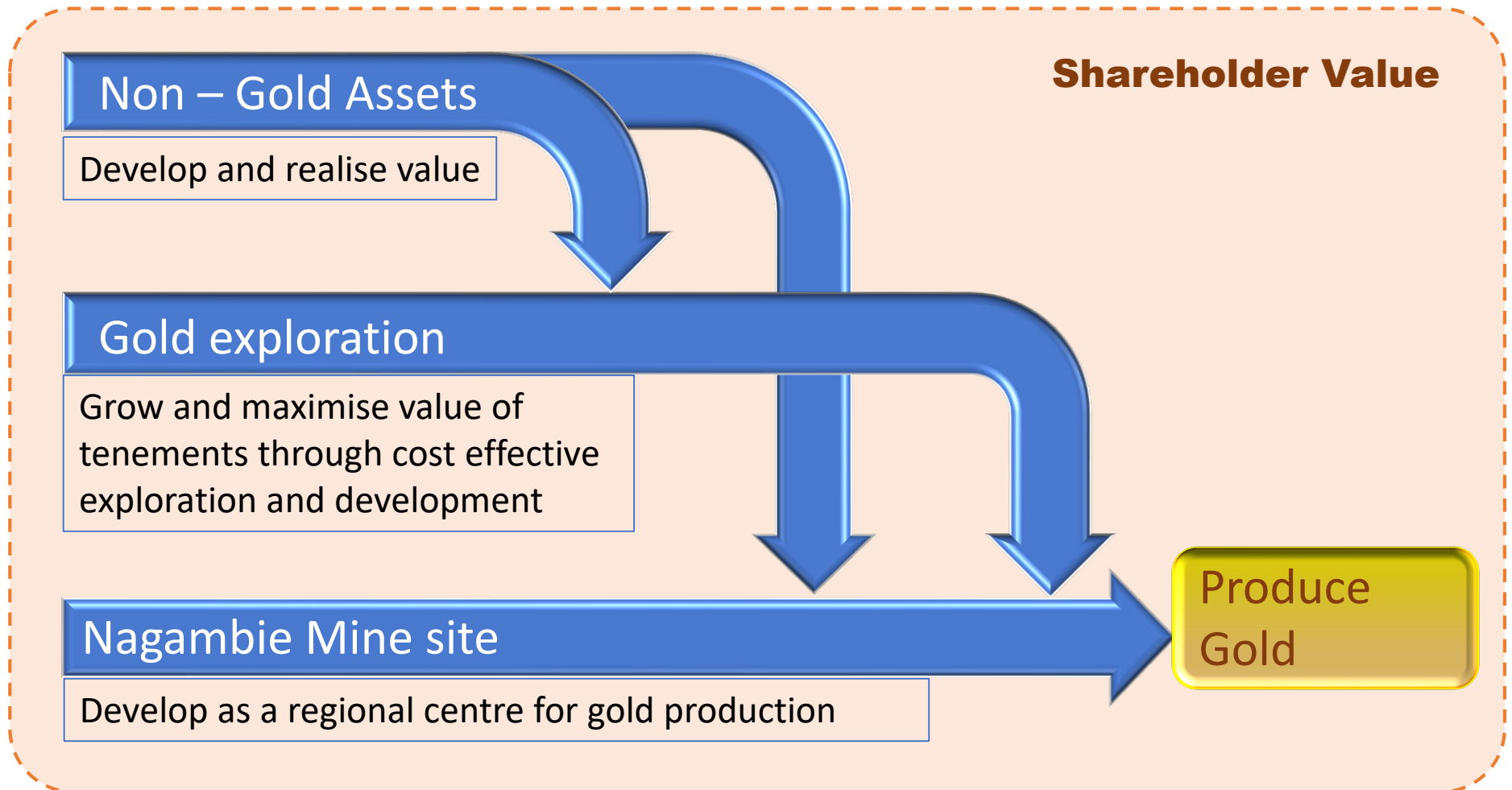
FORWARD-LOOKING STATEMENTS

This presentation contains “forward-looking statements” within the meaning of securities laws of applicable jurisdictions. Forward-looking statements can generally be identified by the use of forward-looking words such as “may”, “will”, “expect”, “intend”, “plan”, “estimate”, “anticipate”, “believe”, “continue”, “objectives”, “outlook”, “guidance” or other similar words, and include statements regarding certain plans, strategies and objectives of management and expected financial performance. These forward-looking statements involve known and unknown risks, uncertainties and other factors, many of which are outside the control of Nagambie Resources and any of its officers, employees, agents or associates. Actual results, performance or achievements may vary materially from any projections and forward-looking statements and the assumptions on which those statements are based. Exploration potential is conceptual in nature, there has been insufficient exploration to define a Mineral Resource and it is uncertain if further exploration will result in the determination of a Mineral Resource. Readers are cautioned not to place undue reliance on forward-looking statements and Nagambie Resources assumes no obligation to update such information.

STATEMENT AS TO COMPETENCY

The exploration results and comments in this presentation have been compiled by Mr Geoff Turner, who is a Fellow of the Australian Institute of Geoscientists, has more than ten years in the estimation, assessment, and evaluation of mineral resources and ore reserves, and has more than 20 years in exploration for the relevant style of mineralisation that is being reported. In these regards, Geoff Turner qualifies as a Competent Person as defined in the 2012 edition of the “Australasian Code for Reporting of Exploration Results, Mineral Resources and Ore Reserves”. Geoff Turner acts as a consultant to Nagambie Resources and consents to the inclusion in this presentation of these matters based on the information in the form and context in which it appears.

Strategy overview



Overview of gold model

- Crustal Faults (circa 40 km deep) – Striking North West

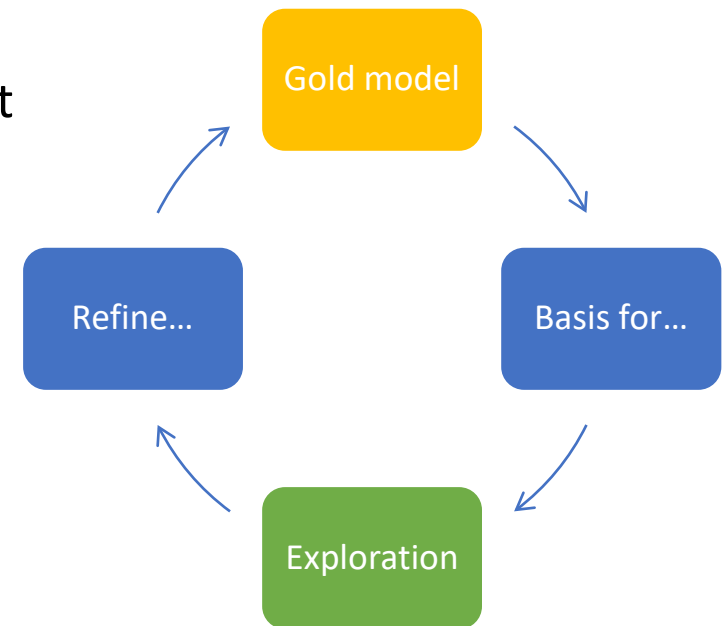
Hot gold-rich hydrothermal fluids rose under pressure up deep crustal faults circa 377 million years ago.

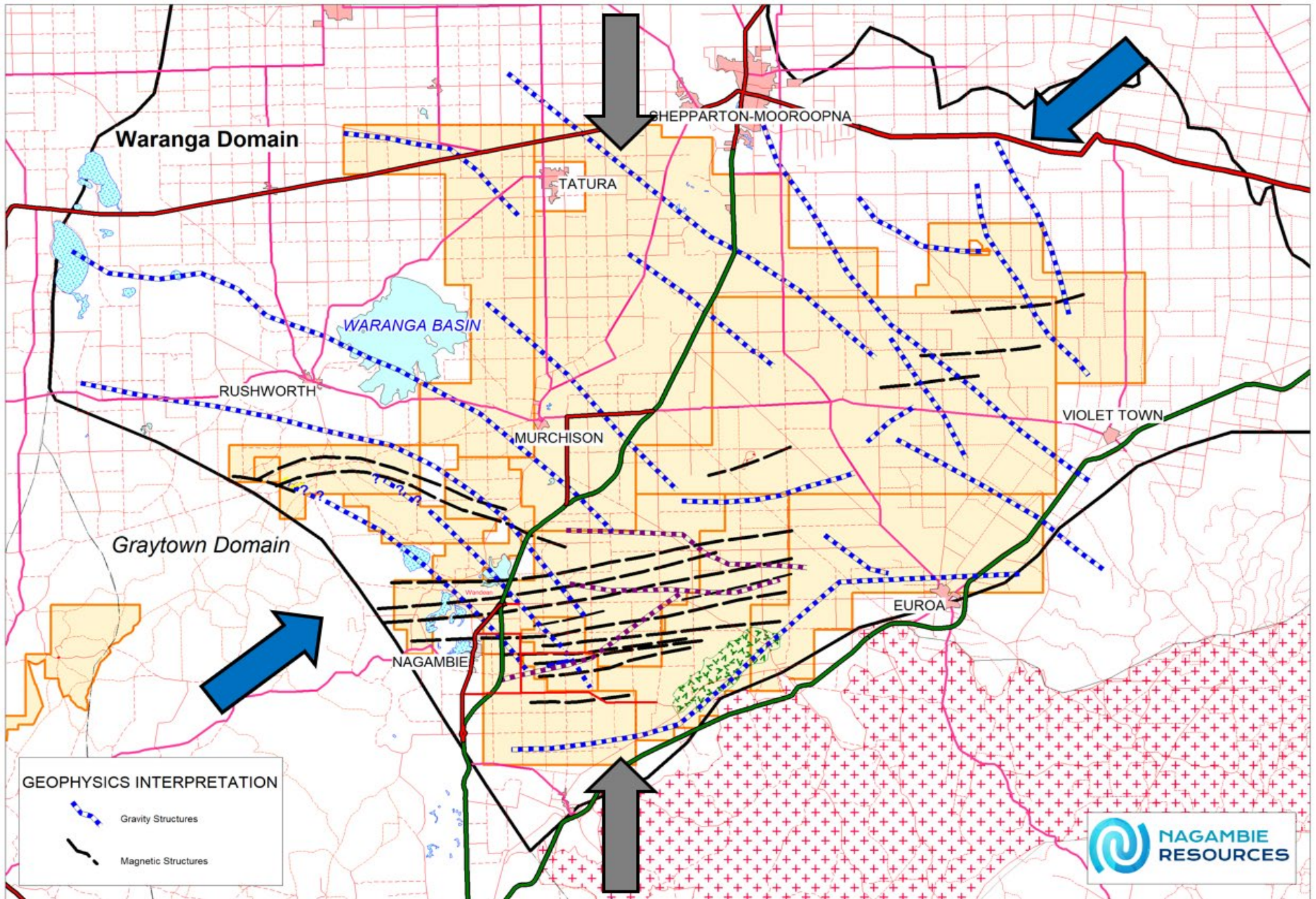
- Surface Thrust Faults (circa 6 km deep) – Striking East West

From regional north-south compression that cracked, at regular intervals, the thick sequence of sandstones and siltstones.

- Intersections of Crustal and Surface Faults

At the intersections, the crustal fluids travelled under pressure along the surface thrust faults to iron-rich sandstones and siltstones favourable to the deposition of gold with arsenopyrite.





Exploration

- Gold exploration for ‘Fosterville-style’ high-grade underground sulphide-gold deposits in the Waranga Province was advanced significantly during the year
 - Induced Polarisation (IP) surveys
 - Exploration drilling

Induced Polarisation (IP) surveys



Nagambie Mine IP Survey

- Under and around the Nagambie Mine 1990s East and West Oxide Pits

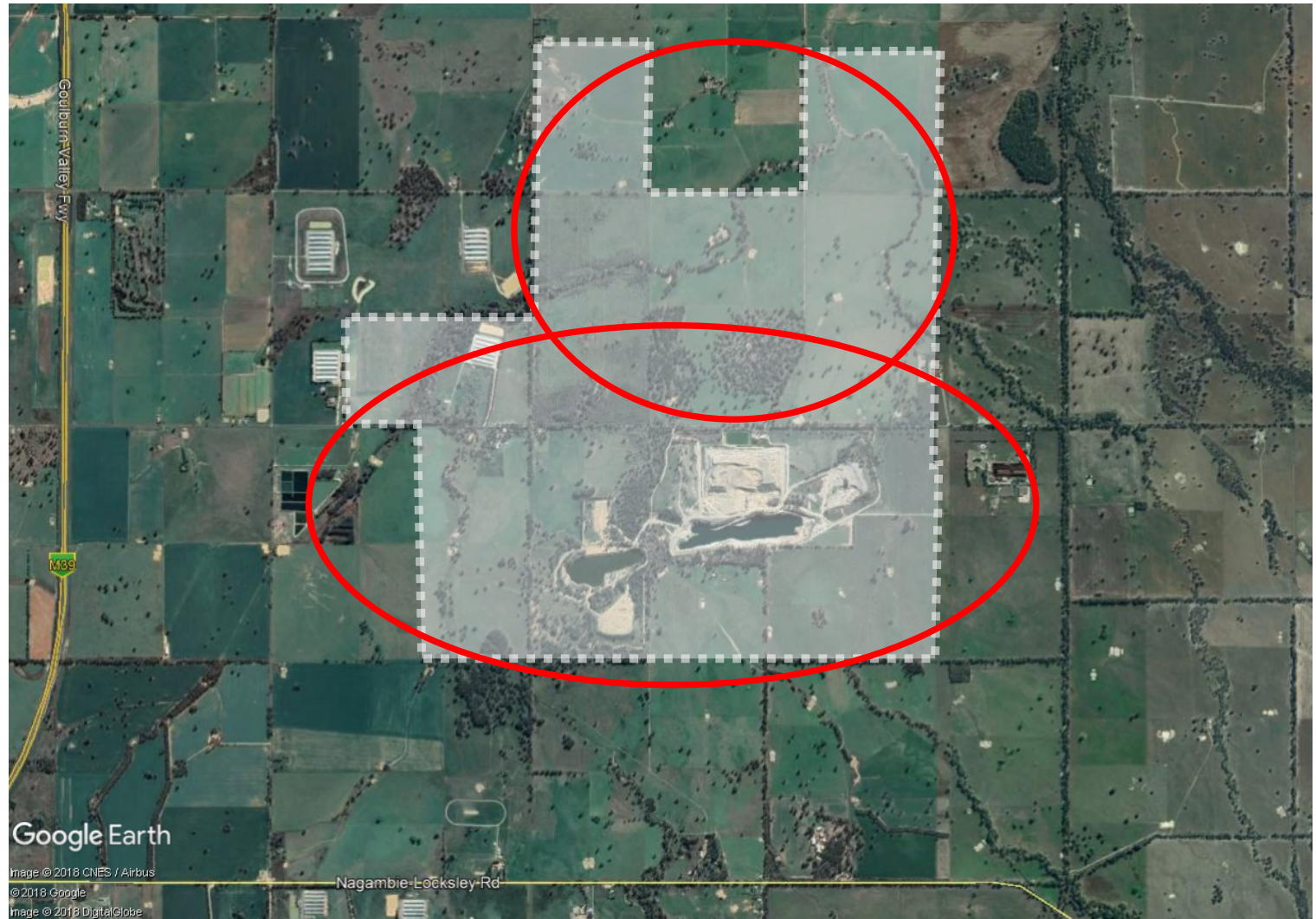
Racecourse Prospect IP Survey

- along the interpreted NW-striking Nagambie Crustal Fault between the Nagambie Mine and the Racecourse Prospect 2.7 km to the north



Induced polarisation survey

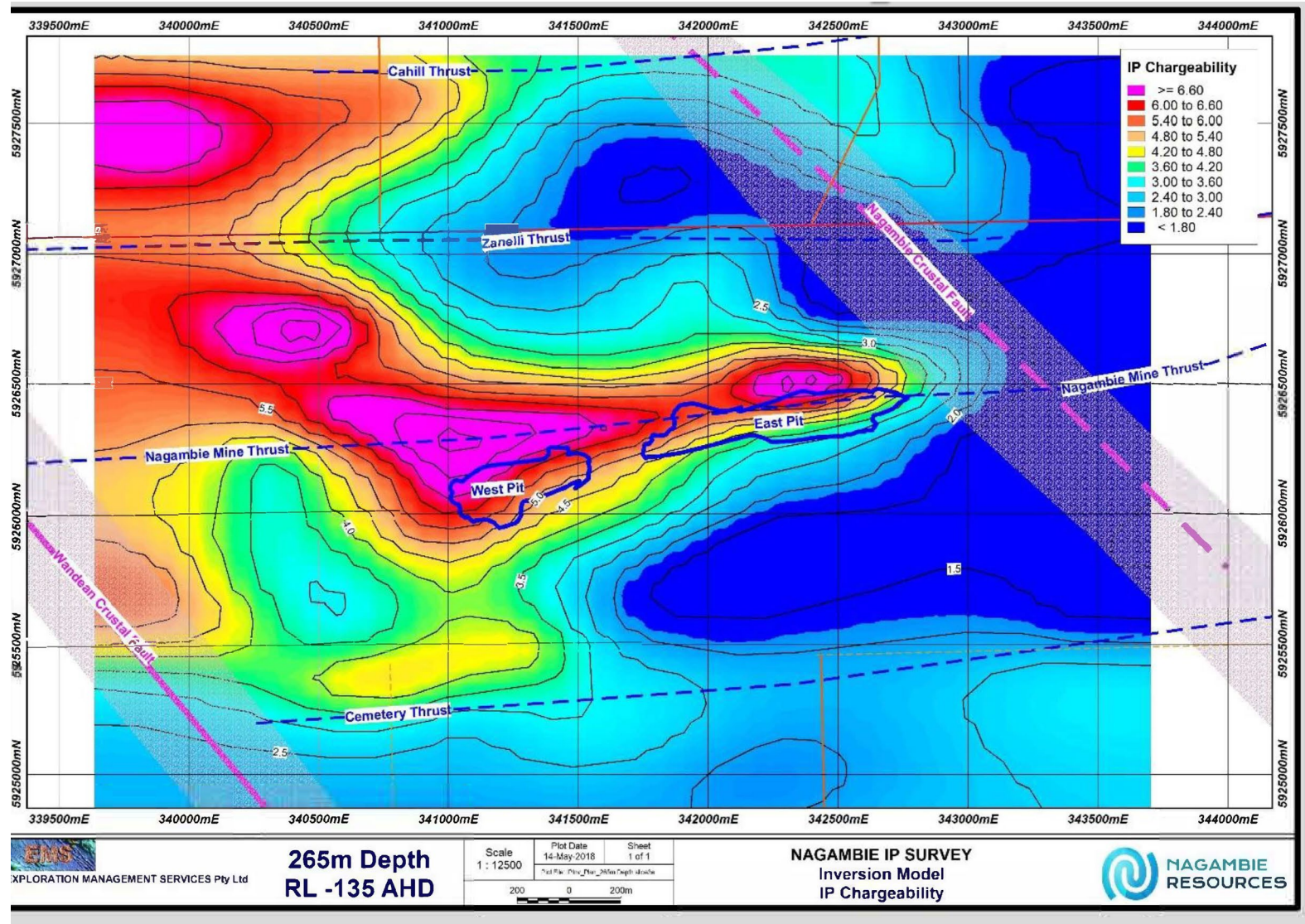
Area of 2018
IP surveys
Targeting the
legacy pits and the
Racecourse
Road soil
anomaly



Nagambie Mine IP survey

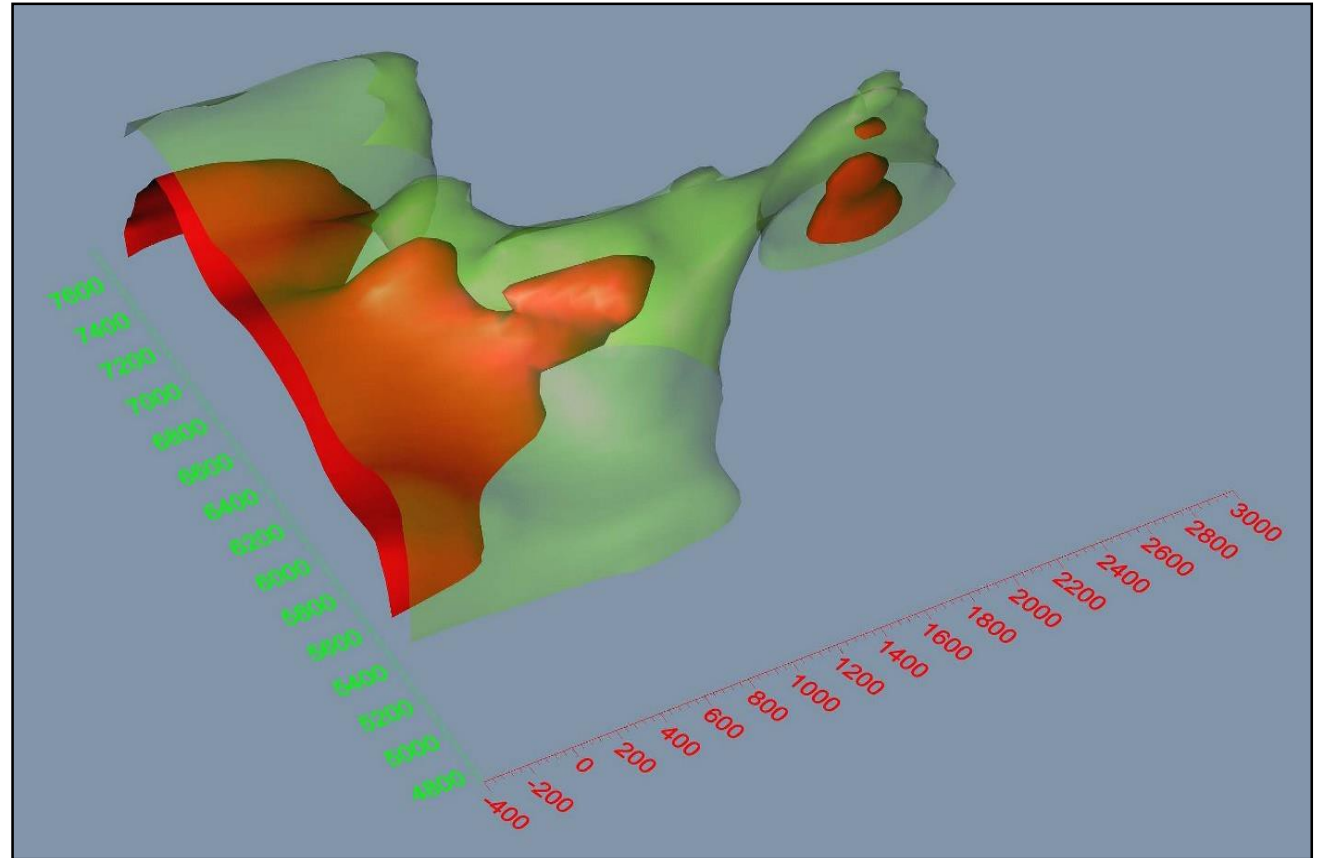
IP detects anomalous concentrations of sulphides at depth (up to 400m deep)

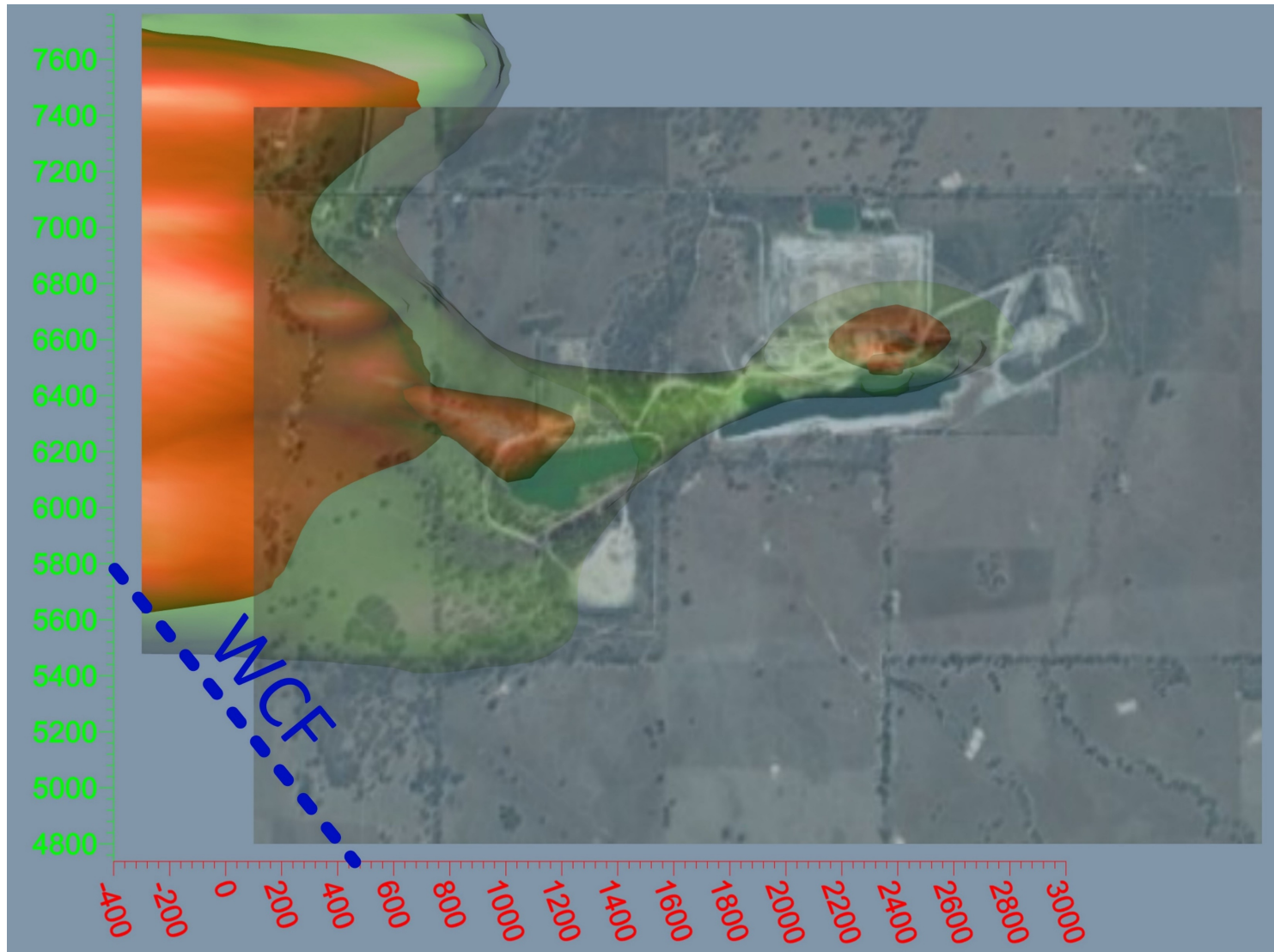
Sulphides associated with gold mineralisation are pyrite, arsenopyrite and stibnite.



Nagambie Mine IP survey

Re-modelling in 3D of the IP chargeability data shows an increase in both width and strength of the IP Chargeability to the west of the mine.





Exploration drilling

Drilling commenced April 2018 – is ongoing.

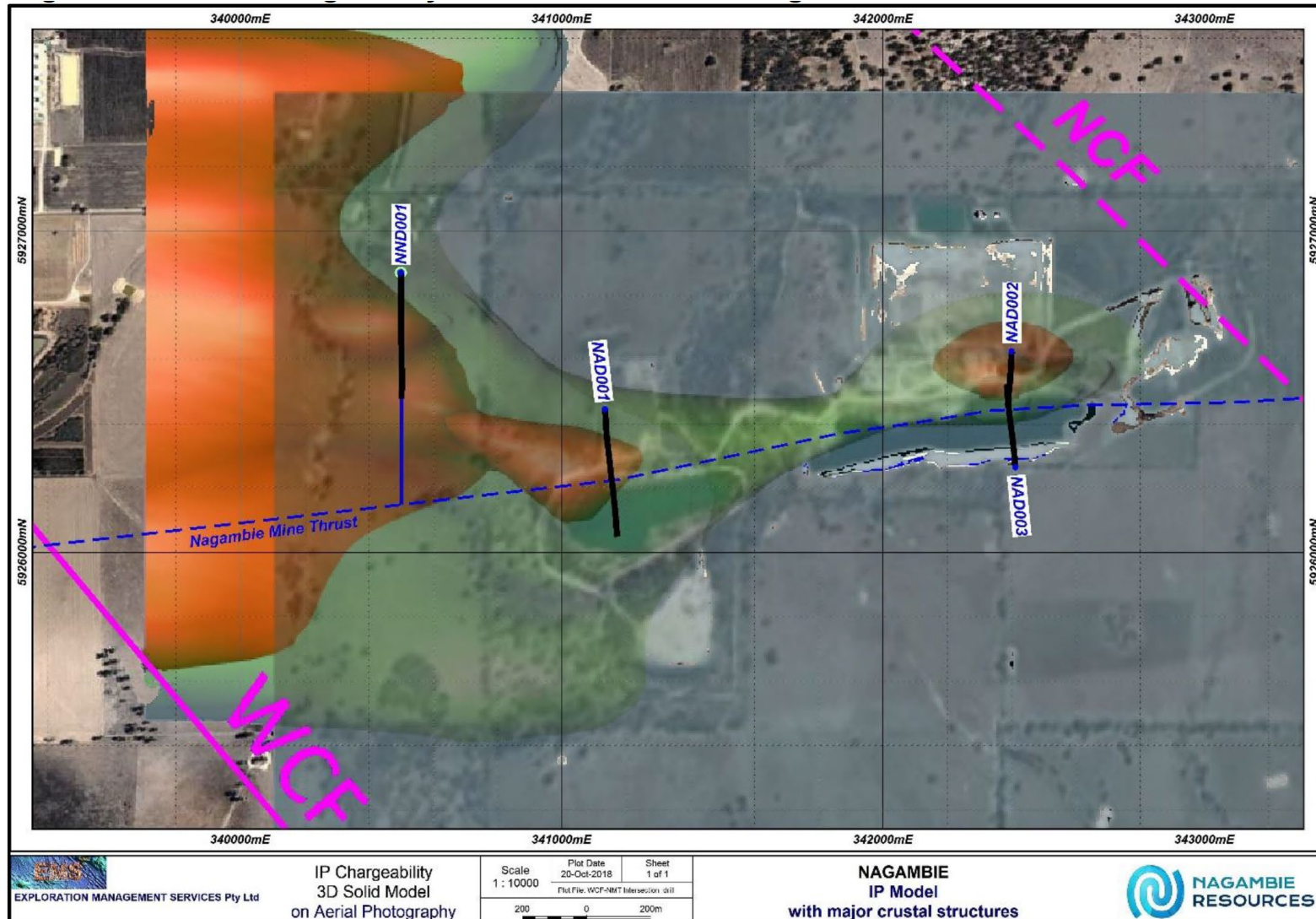
- 3 diamond holes (NAD001, NAD002 and NAD003) in the Nagambie Mine IP anomalies
- 2 diamond (CAD001 and CAD002) holes targeting the Cahill IP anomaly
- 1 diamond hole (RAD001) targeting the Racecourse IP anomaly
- 1 diamond (NND001) hole completed in Nagambie Mine West IP target. NND002 commences today.

Exploration drilling

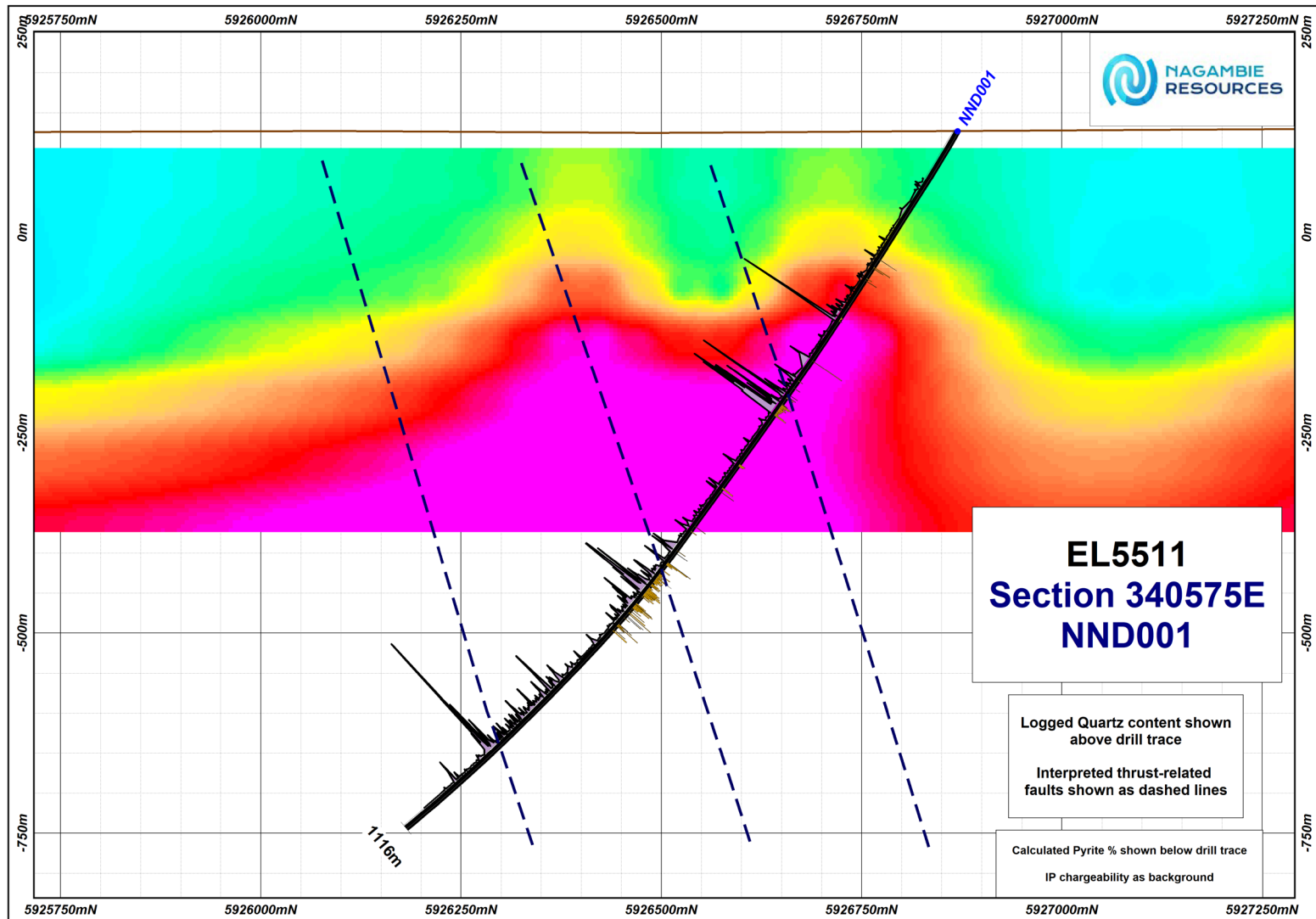
- Drilling has determined:
 - IP appears to have accurately defined mineralisation under the West and East Pits. Based on the 3D modelling high grade mineralisation is expected to exist to the west
 - Cahill and Racecourse IP anomalies have been eliminated and downgraded respectively
 - NND001, first hole in the Nagambie Mine West area has shown intersections of coarse sandstone flooded with hydrothermal quartz and carbonate, supporting hypothesis that grades of mineralisation increase to the west

NND002 commences today.

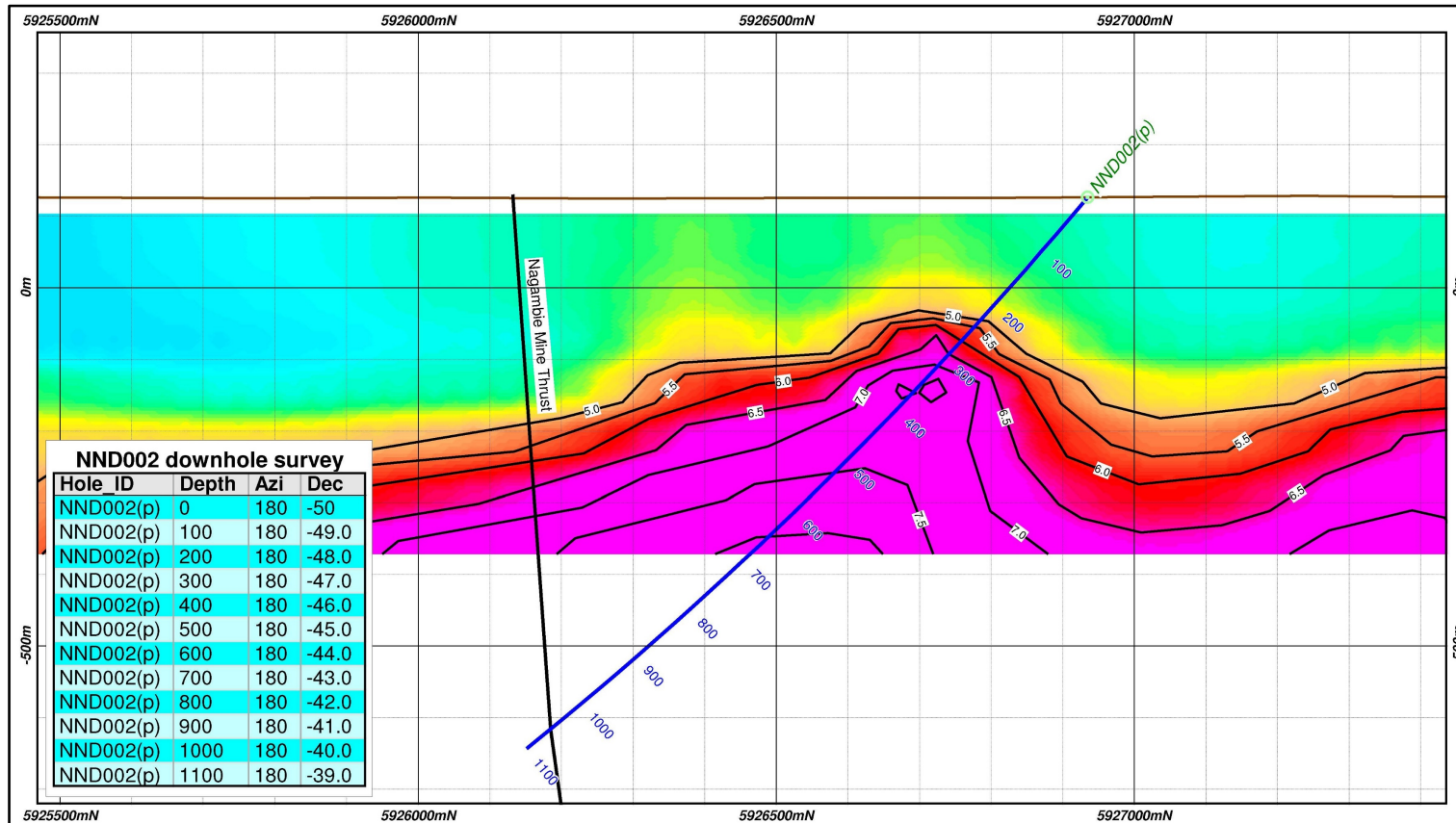
Nagambie Mine 3D IP survey






NND001 EOH 1,116m



NND002 commenced 200m west



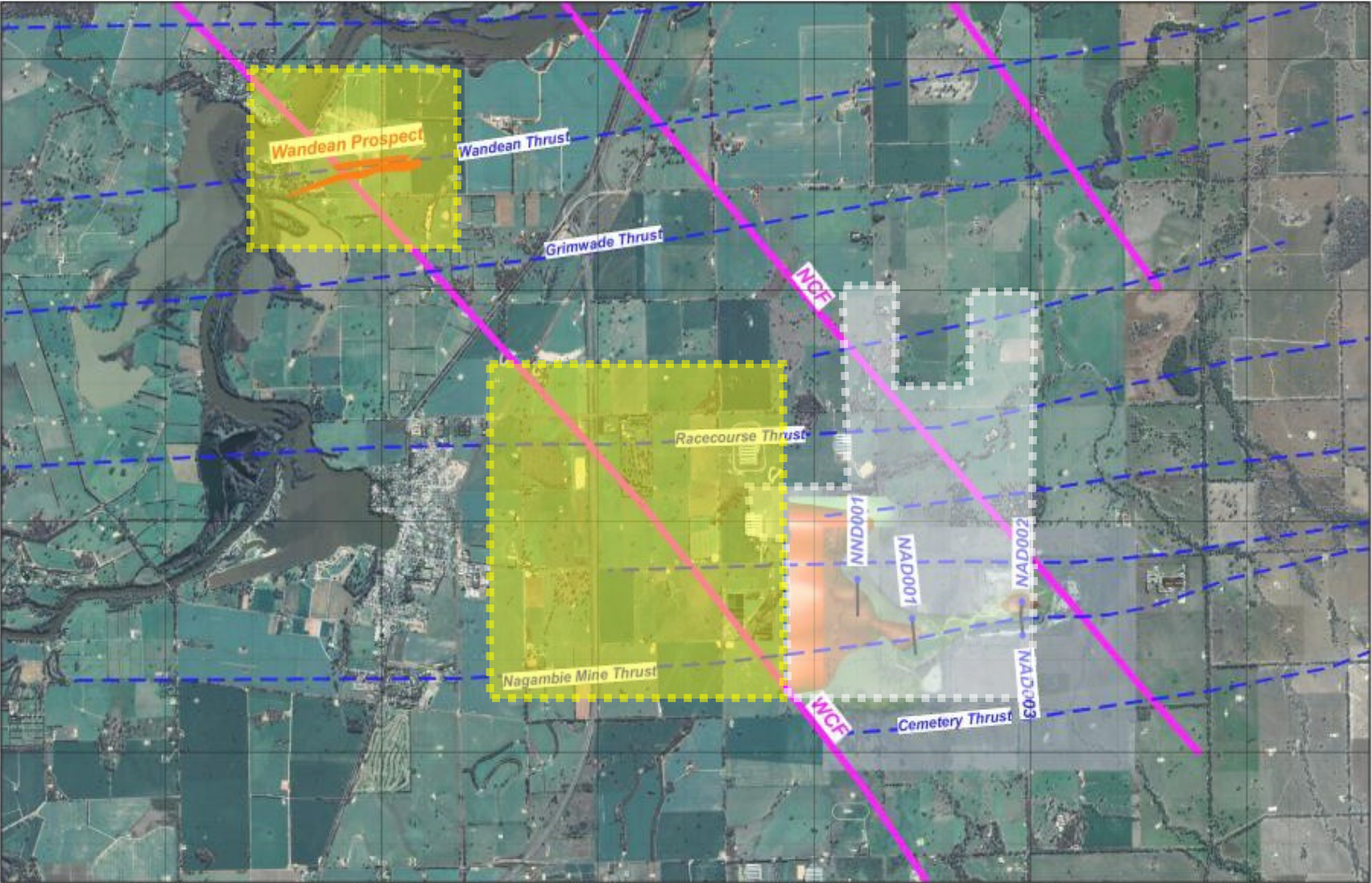
 EXPLORATION MANAGEMENT SERVICES Pty Ltd	Background IP Chargeability Gridded from model (September, 2018)	Scale 1 : 5000	Plot Date 24-Oct-2018	Sheet 1 of 1	NAGAMBIE NORTH Section 340300E Proposal to Drill to NMT	
				Plot File: NND002 to NMT		

Wandean Crustal Fault (WCF)

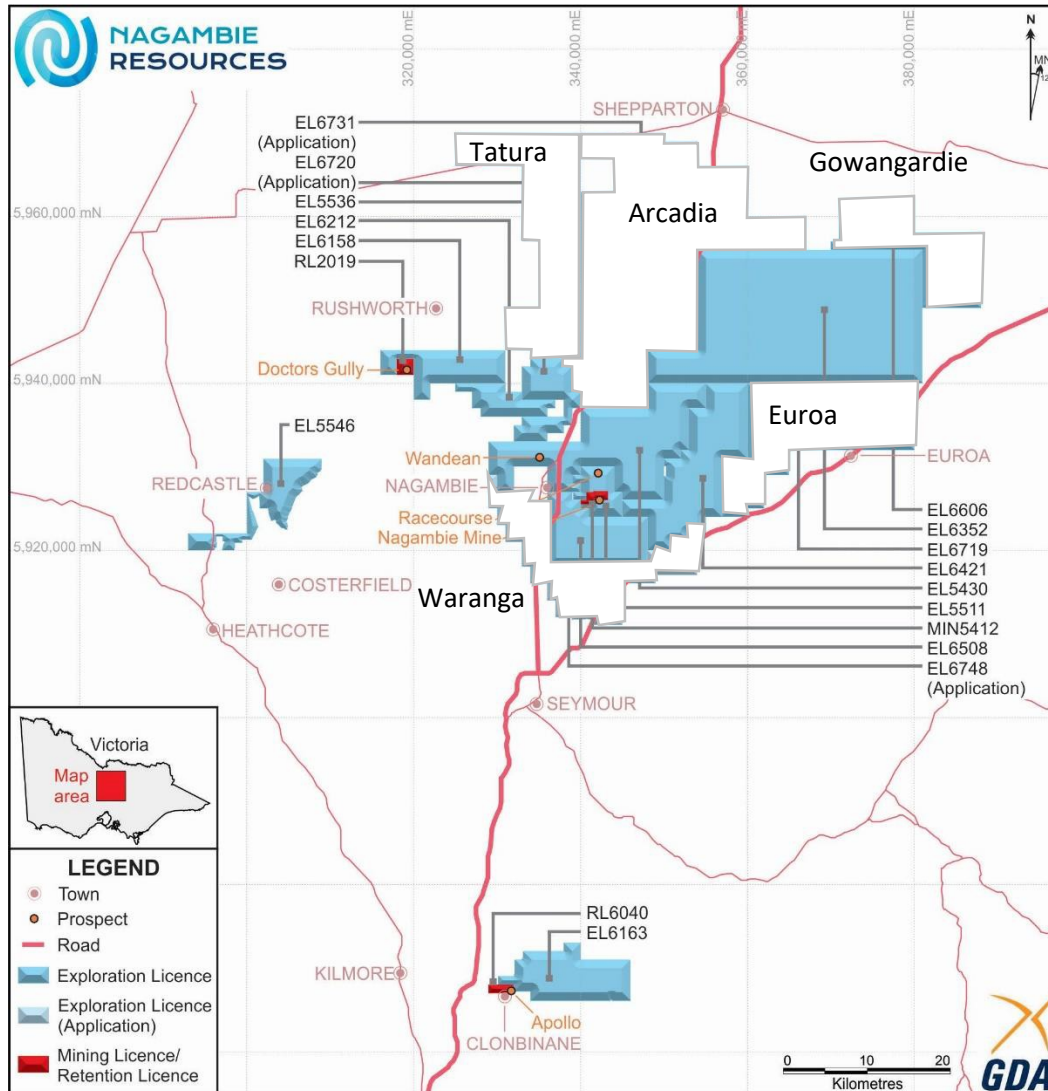
- The Wandean Prospect (discovered in 2014) is at the intersection of the Wandean Crustal Fault (WCF) and the Wandean Thrust Fault.
- The WCF appears to be a major pathway for mineralised fluids.
- Gold containing fluids travelled up and along the WCF and subsequently spread out along the Wandean and Nagambie Mine Thrusts.



2019 exploration focus

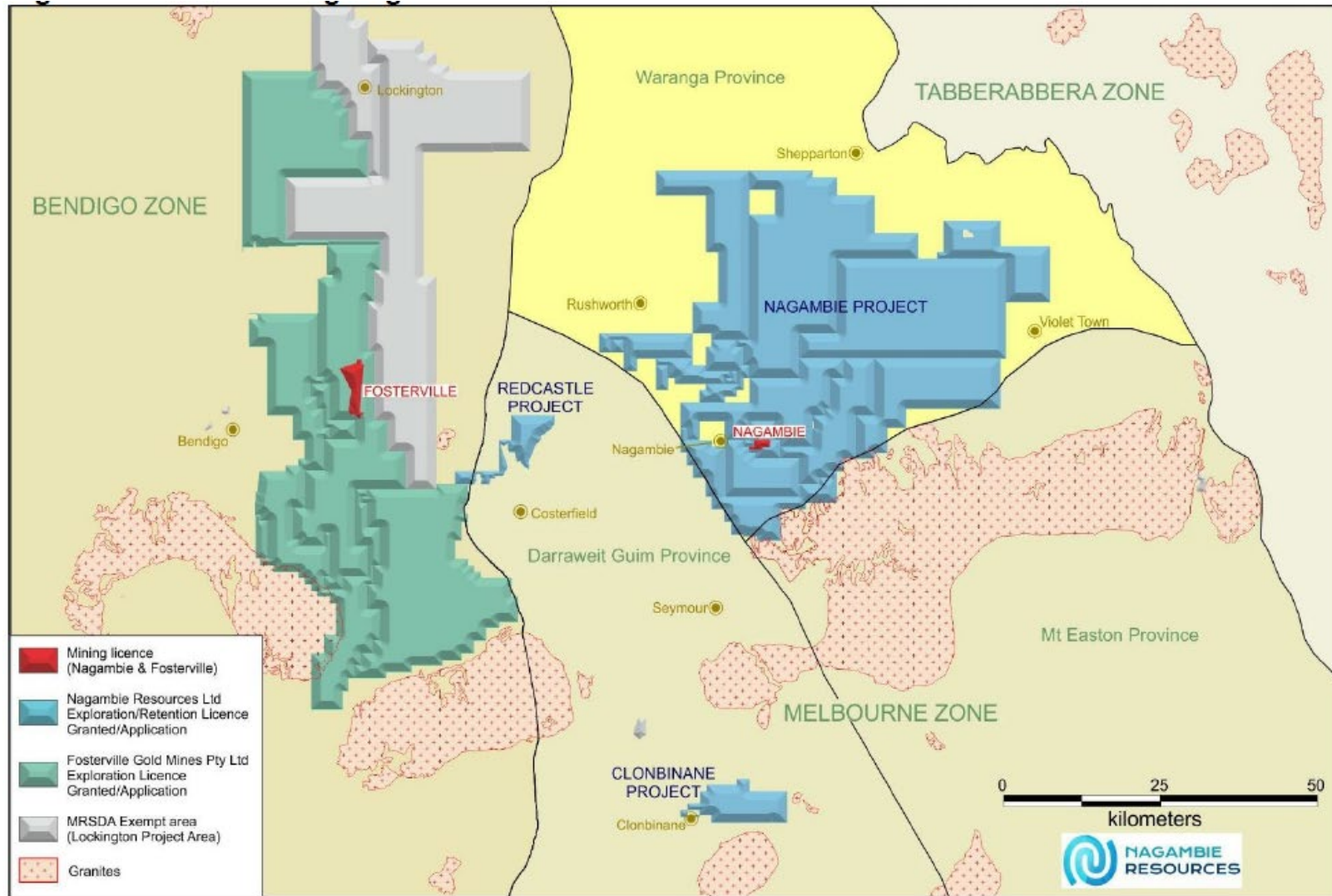


Tenements 2017 and 2018



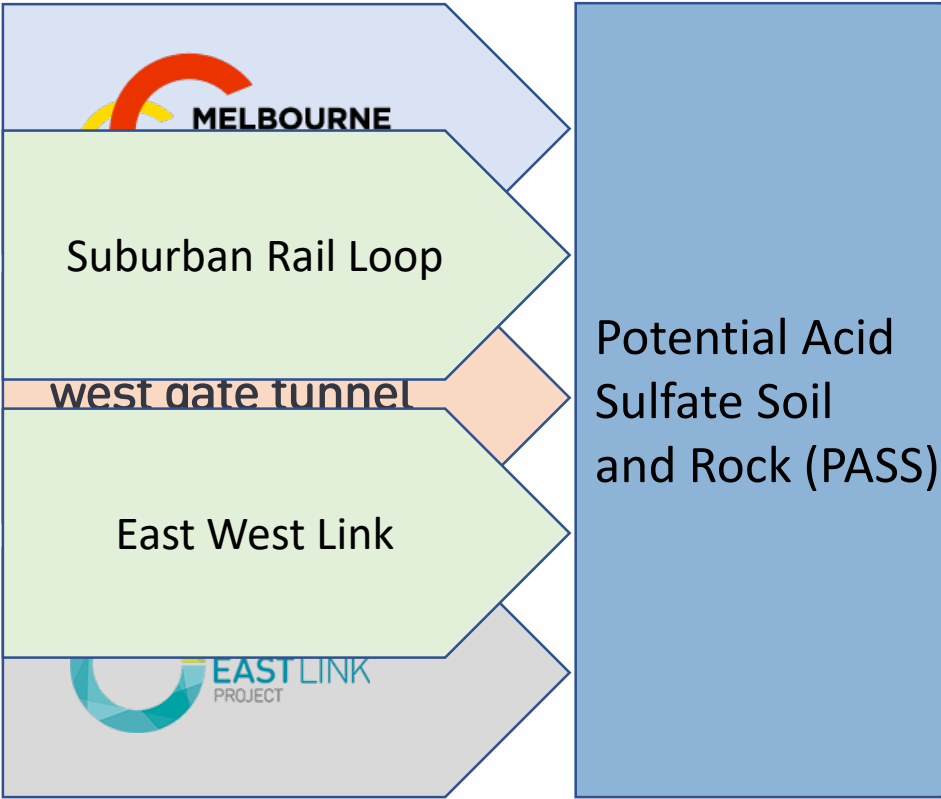
Tenement Number	Tenement Name	sq km
MIN 5412	Nagambie Mining Licence	3.6
EL 5430	Bunganail Exploration Licence	181.0
EL 5511	Nagambie Exploration Licence	27.0
EL 5536	Wandean North Exploration Licence	48.0
EL 6212	Reedy Lake North Exploration Licence	30.0
EL 6158	Rushworth Exploration Licence	56.0
RL 2019	Doctors Gully Retention Licence	4.0
EL 6352	Miepoll Exploration Licence	455.0
EL 6421	Pranjip Exploration Licence	139.0
EL 6508	Tabilk Exploration Licence	84.0
EL 6606	Gowangardie Exploration Licence	120.0
EL 6719	Euroa Exploration Licence	204.0
ELA 6720	Tatura Exploration Licence Application	214.0
ELA 6731	Arcadia Exploration Licence Application	493.0
ELA 6748	Waranga Exploration Licence Application	136.0
Subtotal Waranga Province		2,194.6
EL 6163	Clonbinane South Exploration Licence	79.0
RL 6040	Clonbinane Retention Licence	3.0
EL 5546	Redcastle Exploration Licence	69.0
Total		2,345.6

Nagambie 60km east of Fosterville

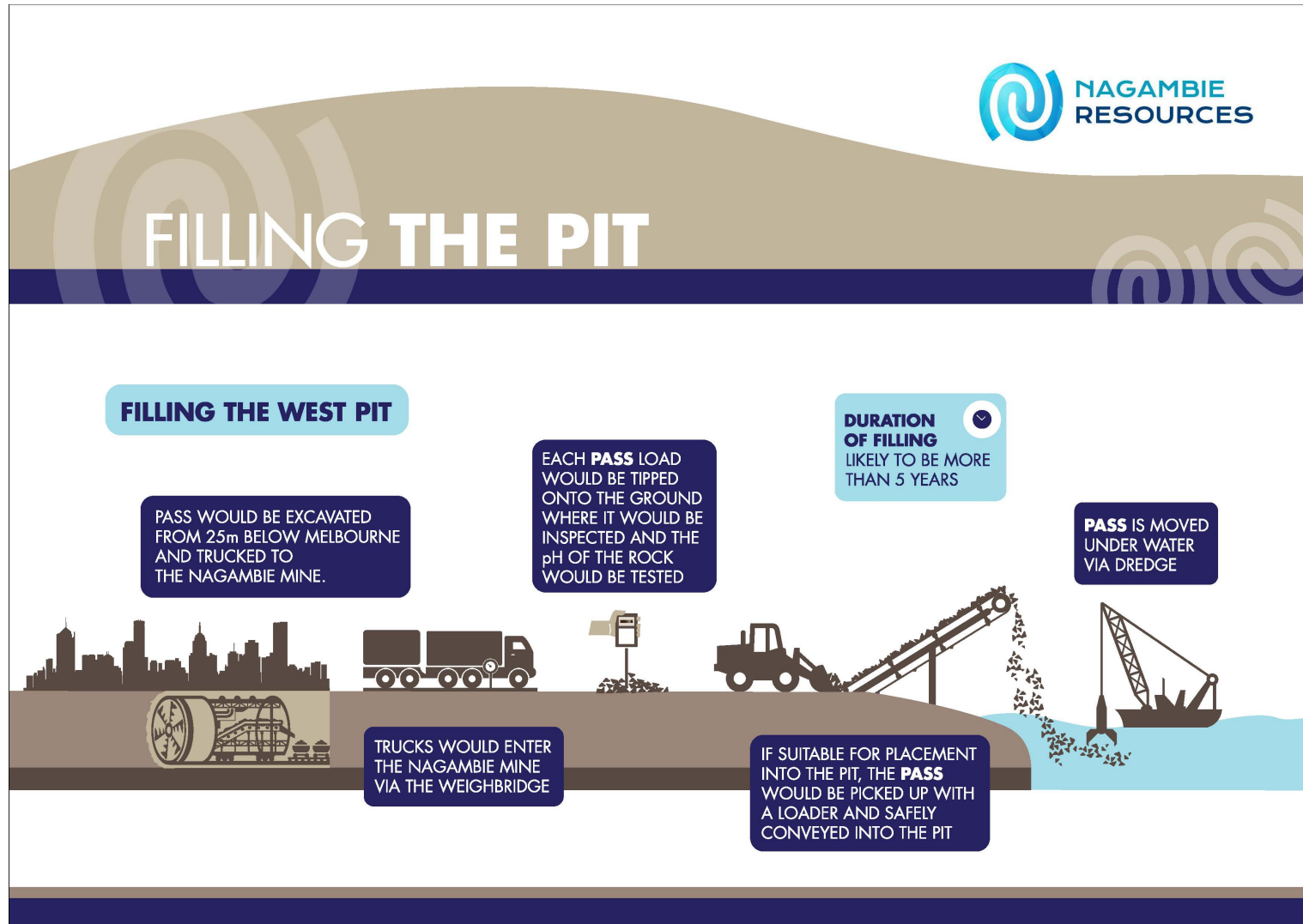


PASS Project

- A rehabilitation project



PASS Project



PASS Project

2017/18

- Awarded all project permits:
 - EPA approved EMP for 10 years (2028)
 - Mining Licence for 13 years (2031) with an approved Work Plan that includes placing PASS in West Pit.
- Held initial discussions with various parties involved in spoil handling for Metro Tunnel Project

Quarrying

CONCRETE AGGREGATES

Competitive advantages:

- 3,000,000 tonnes of material available
- Rock is already crushed
- Aggregates are suitably angular (less cement is needed)
- Aggregates are a 'recycled product'

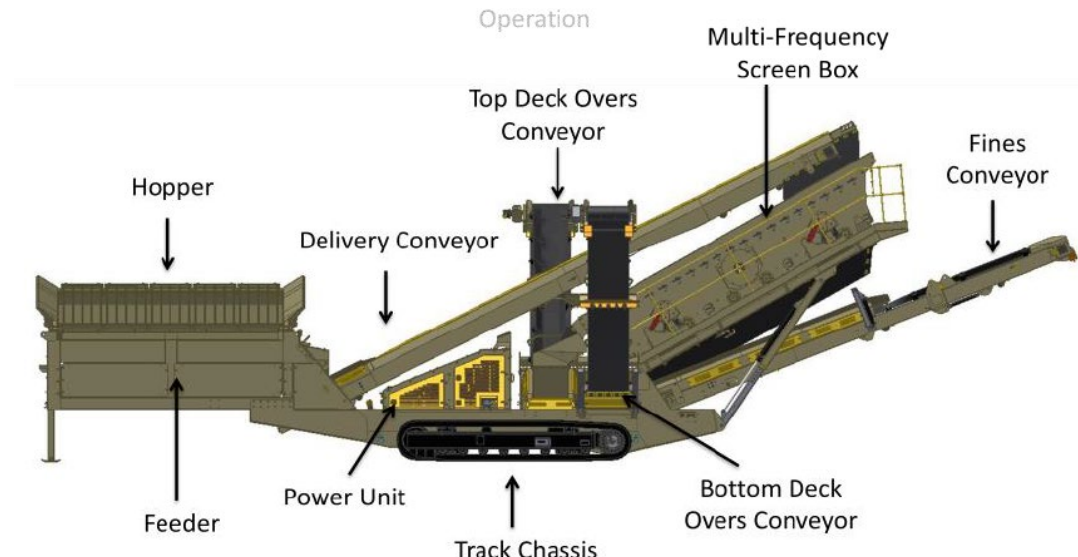
Challenge

- Removing sufficient fines to produce suitable concrete aggregates



Quarrying

- Leasing and trial of GT205 MF
 - Performance on heap leach material
 - To identify what other equipment is needed to produce saleable products.

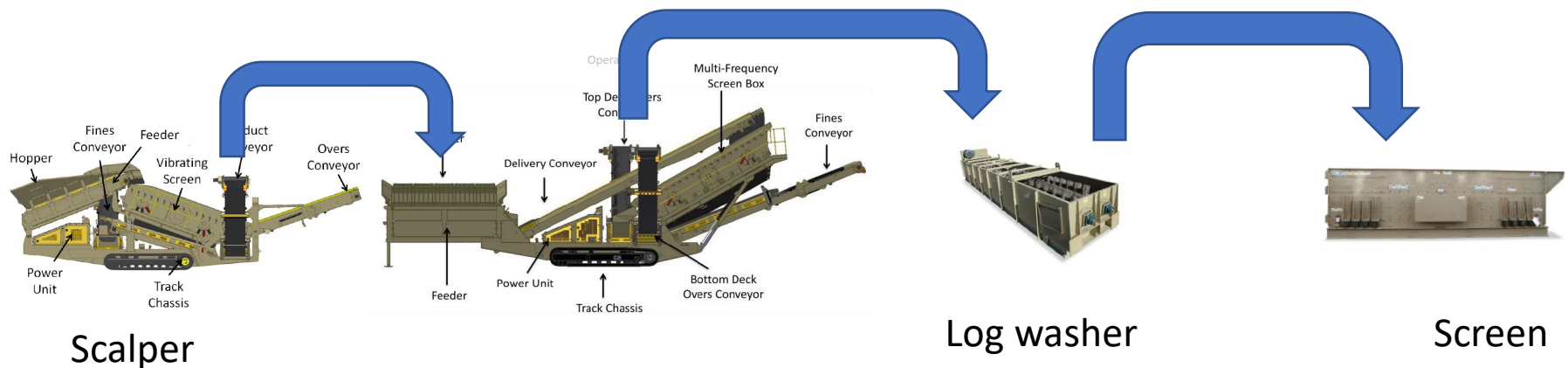


GT205 *Multi-Frequency* Track-Mounted Screen



Trial conclusions

- Some fines in heap leach are very ‘sticky’ (related to the cement and lime added during gold leaching processes). Additional effort required to remove sufficient fines
- Requires front end (scalping) and back end processing (wash/rinse)
- Project margins remain strong with required plant

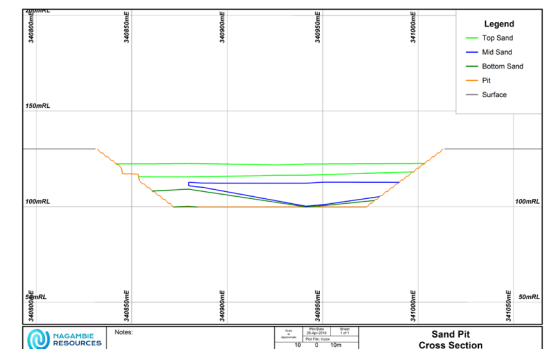
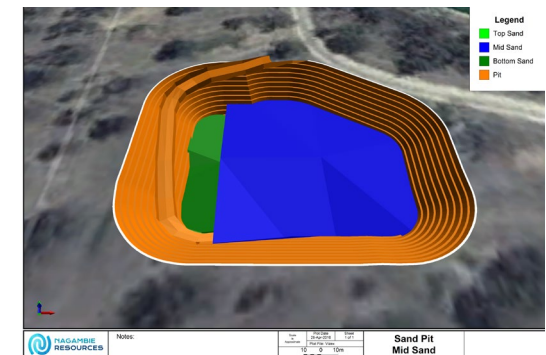
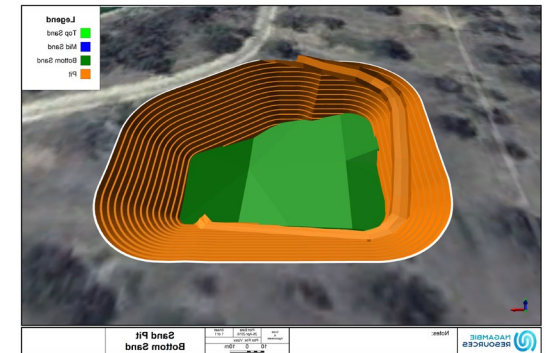


Quarrying

SAND

2017/18

- Refined preliminary pit designs
- Completed preparation of internal roads and sand processing /stockpiling area
- Advanced approvals process
 - Planning permit
 - Work Plan
 - Technical studies

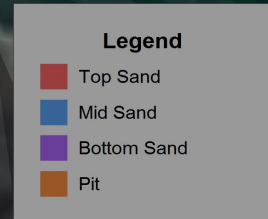


Quarrying

SAND

In 2019

1. Advance approvals process
 - Planning permit
 - Work Plan approval
 - Purchase vegetation offsets
 - Purchase groundwater extraction and recharge permits
2. Trial sand screening with GT205
3. Pursue supply commitments



Quarrying



CLAY

- Complete planning approval for new clay pit by end 2018
- Can be used in crushed rock products or as capping material for landfills
- Flexibility with onsite infrastructure

Re-processing 'fines'

- Based on historic data, heap leach material could average 0.2 g/t of gold*
- Potentially 19,000+ ounces of Gold in the 'fines'

* 0.2 g/t of gold based on historically reported head grade of 1.0 g/t and reported gold recovery of 80%. The estimation provided is historical in nature and not reported in accordance with the JORC 2012 Code. A competent person has not done sufficient work to classify the historical estimates as mineral resources or ore reserves in accordance with the JORC 2012 Code. It is uncertain that following evaluation and/or further exploration work that the historical estimates will be able to be reported as mineral resources or ore reserves in accordance with the JORC 2012 Code.

www.nagambieresources.com.au

James Earle – Chief Executive Officer
james@nagambieresources.com.au
0481 462 642